



Hydraulic accessories for fountains

REGULATION FLANGE



AISI304

AISI316

BRONZE

100%
METAL



- Made of AISI304 (AISI316 on request) in the 1/2" and 1" versions
- Made of bronze in all versions
- Perfect axial regulation of the jet, easy and durable
- $\pm 5^\circ$ maximum axial regulation
- Reduced space required
- Wide range of dimensions

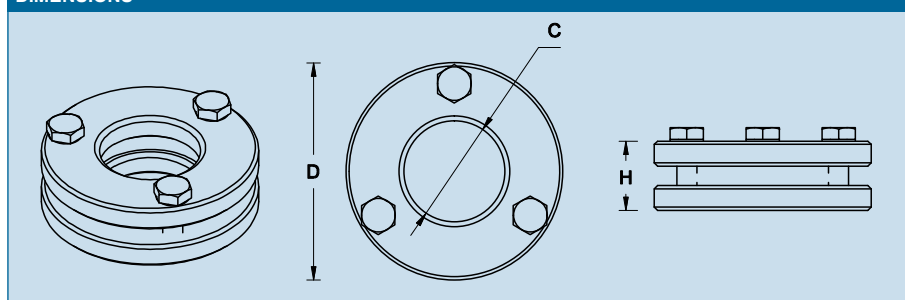
The regulation flange for fountain nozzles allows the perfect axial regulation of the water jet with a minimal required space.

Differently from common spherical joints, the flange allows an easy, fast and durable water jet axial regulation. Once regulated, the bolted flange prevents the change of position of the nozzle, even accidental, which often occurs with the common spherical joints, because of hits or screwing.

Available in a wide dimensional range, from 1/2" up to 3", the regulation flange is made of bronze in all the versions and in AISI304 stainless steel (AISI316 on request) for the 1/2" and 1" ones.

	FLANGE 50	FLANGE 75	FLANGE 100	FLANGE 125	FLANGE 150	FLANGE 200	FLANGE 250	FLANGE 300
CODE	FL50	FL75	FL100	FL125	FL150	FL200	FL250	FL300
D x H	50 x 20.5 mm	65 x 25.5 mm	65 x 25.5 mm	80.5 x 27 mm	95 x 30.5 mm	108.5 x 30.5 mm	135 x 38 mm	135 x 38 mm
C	1/2 "	3/4 "	1 "	1 1/4 "	1 1/2 "	2 "	2 1/2 "	3 "
MATERIAL	Stainless steel/Bronze	Bronze	Stainless steel/Bronze	Bronze	Bronze	Bronze	Bronze	Bronze
WEIGHT	270 g	480 g	450 g	680 g	1150 g	1400 g	2670 g	2260 g

DIMENSIONS



APPLICATION

